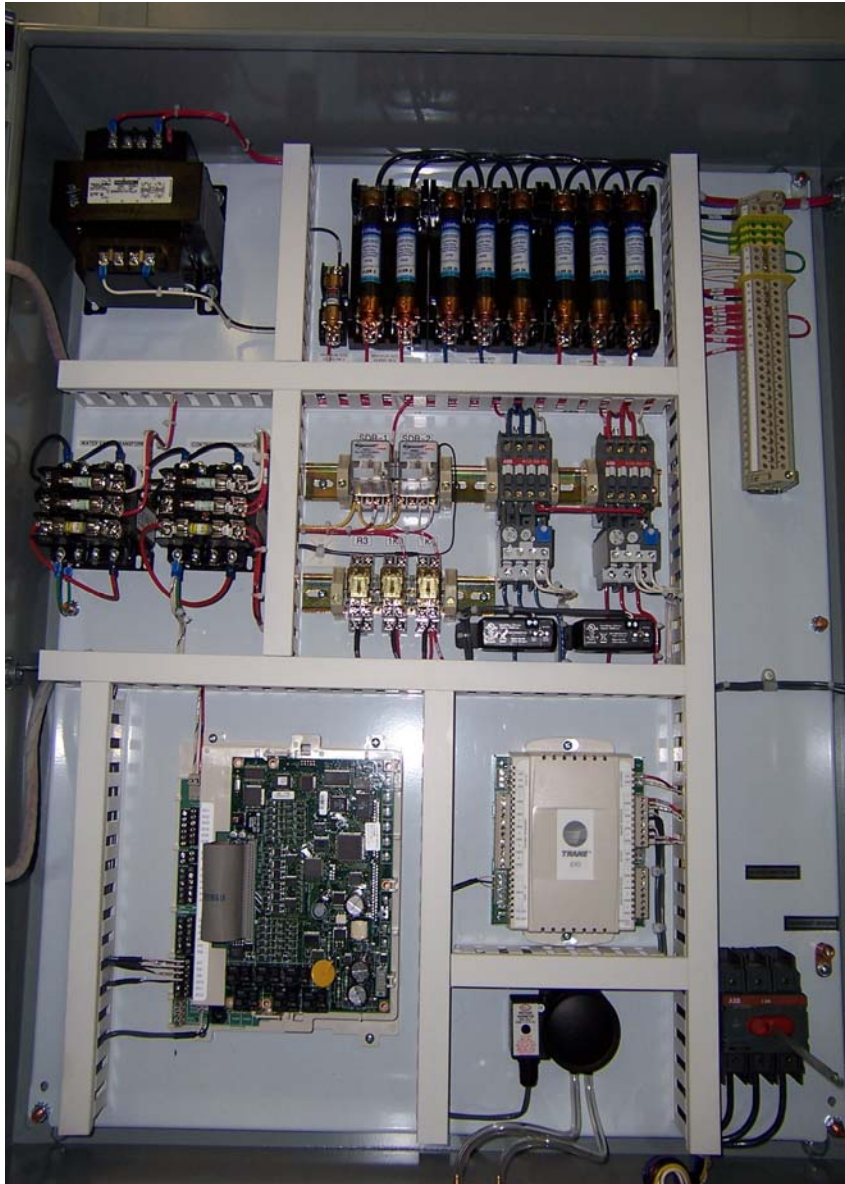
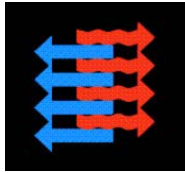


Johnson MarCraft Total Solution™

Case Study: INJECTION MOLDING
PLASTIC PACKAGING - Kentucky



- **ACTIVITY:**
Injection molding of plastic packaging materials.
- **CHALLENGE:**
Space temperature and humidity control is important to produce a consistent quality product. The roof structure would not permit any roof top HVAC equipment.
- **JOHNSON TOTAL SOLUTION:**
Two Johnson Air-Rotation® Cooling Units, each with 110 tons of CW cooling and 190 kW of electric reheat. Johnson provided a factory-mounted and wired Trane Tracer Programmable Controller, permitting rapid onsite commissioning with use of the Rover service tool.
- **RESULT:**
Only a few hours of field checkout time to have the equipment up and running with computer monitoring on a LON network.

This company is a premier company providing packaging solutions to a wide variety of industries. This facility makes CD cases, among other products.